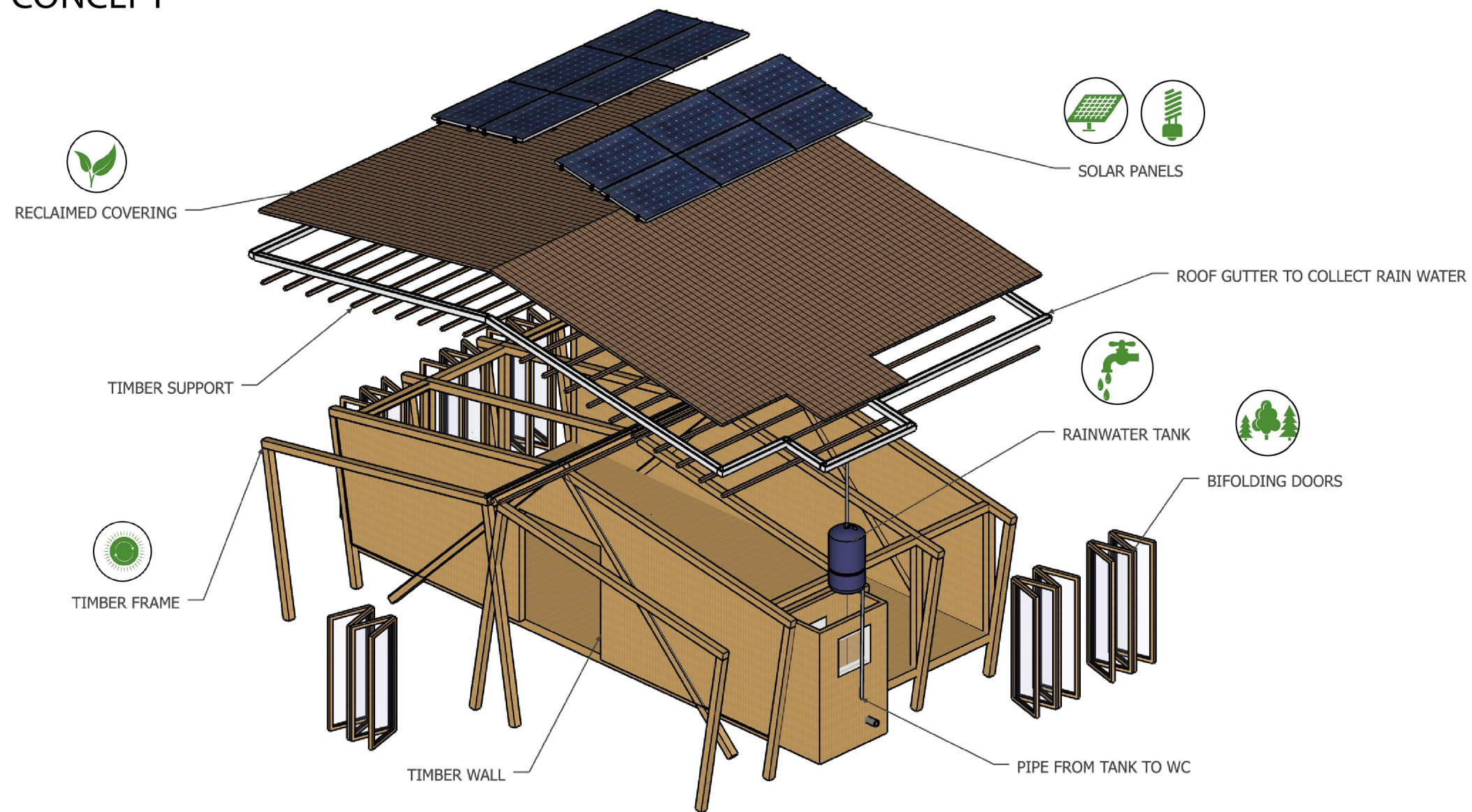
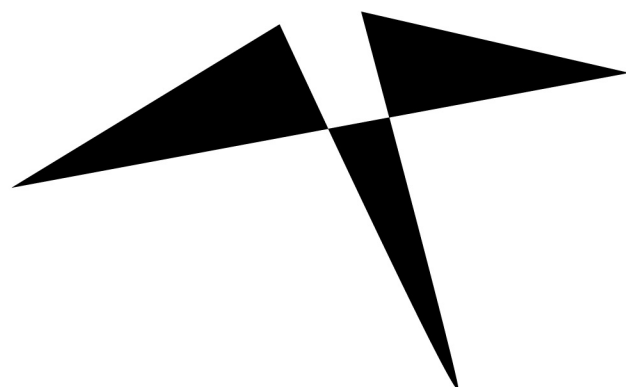


# MODULAR CABIN CONCEPT

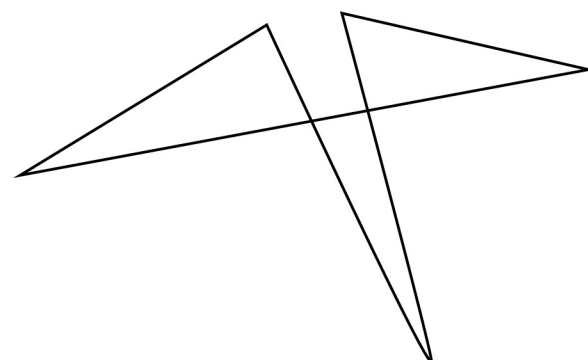




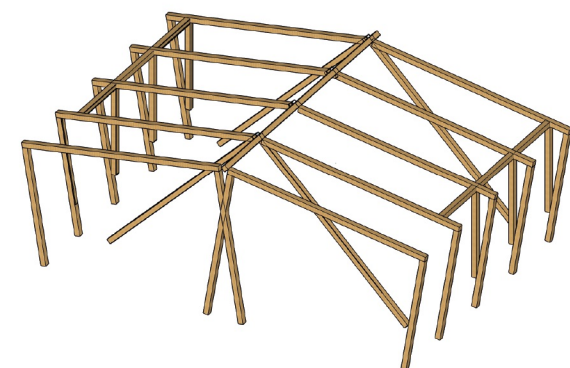
# MODULAR SUSTAINABLE CABIN CONCEPT DEVELOPMENT



The design of the centre is inspired by the abstracted geometry in Kayaking & Canoeing achieved by sculpting the a sculptural roof form, to provide visual interest.



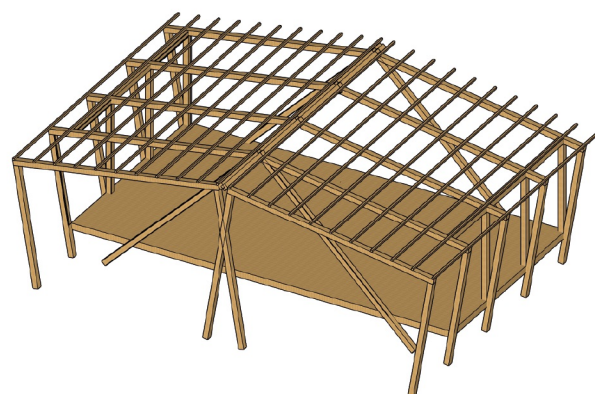
Using the triangular lines created with the form



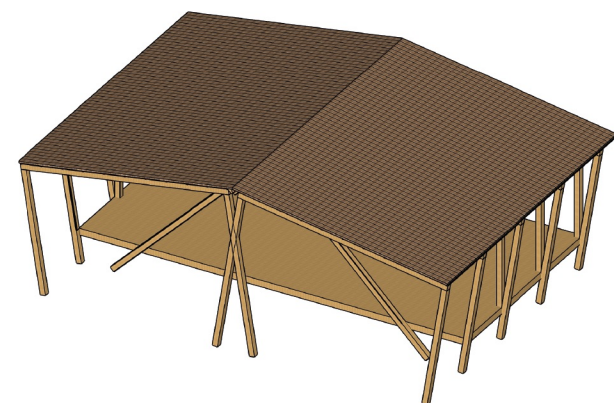
Using the lines to create structure profile of cabin



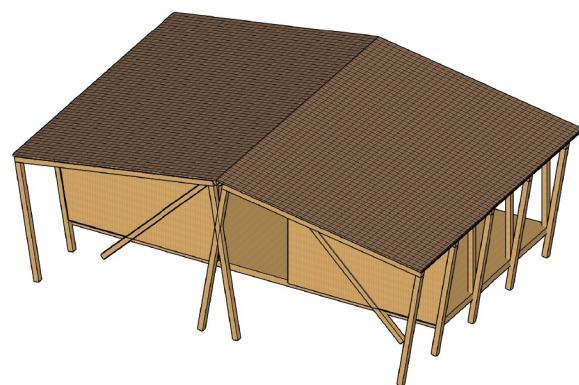
Adding wooden support on the structural profile to take room



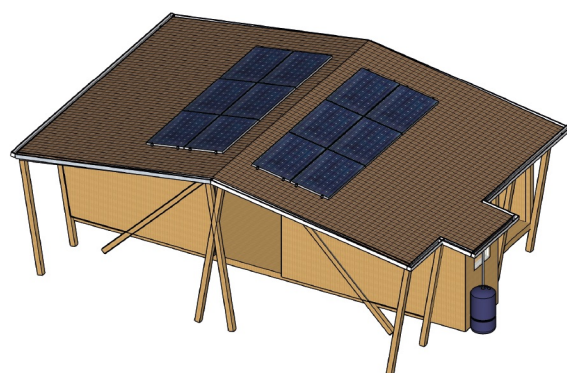
Adding elevated floor level to prevent flooding



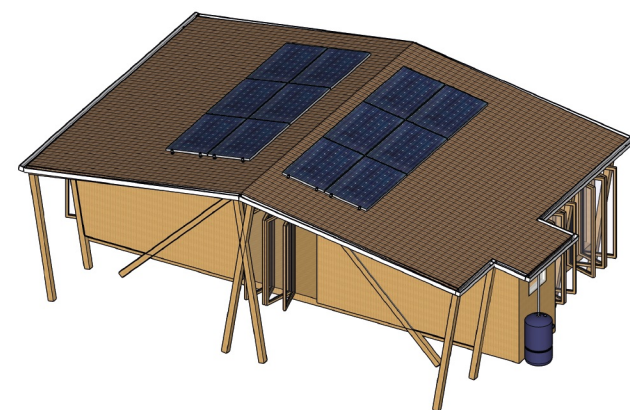
Using reclaimed wood as roof covering



Using reclaimed wood as wall covering



Using solar panels as source of renewable energy and storm water harvesting using roof gutter and water tank for WC usage



Bifolding using polycarbonate panels fixed to timber frames.